

• The Ultimate 3D Experience •

# POP

# SYSTEMS

INTERNATIONAL



Catalogue 2012



# Creative Box<sup>®</sup> 3D

## Activity and art & craft 3D box

**CONTENTS:** a magnificent 3D decor, 2 sets of stickers (from 13 to 28 pcs) 4 stencils, 5 markers, 5 color pencils, an eraser, a pencil sharpener, 2 plates of stand-alone characters or decors and a coloring book.

model: *Cars 2*  
ref: 716JE01  
EAN: 3700572301419



©Disney Pixar

model: *Princess*  
ref: 716JE02  
EAN: 3700572301426



©Disney



# Creative Box 3D

- SIZE: CLOSED: 247 x 40x 163 mm
- MASTER CASE: 18 pieces  
504 x 370 x 173 mm - 10 kg
- PALLET: 40 Master cases (720 Creative Box 3D)  
80 x 120 x 188 cm - 10 layers - 4 master cases by level

model: **Winnie The Pooh**  
ref: 716JE03  
EAN: 3700572301600



**Winnie the Pooh**



Based on "Winnie the Pooh" works, by A.A. Milne and E.H. Shepherd



©Disney

model: **MICKEY MOUSE CLUBHOUSE**  
ref: 716JE04  
EAN: 3700572301617



**MICKEY MOUSE CLUBHOUSE**



©Disney



# Creative Box 3D

**Activity and art & craft 3D box**  
**CONTENTS:** a magnificent 3D decor, 2 sets of stickers (from 13 to 28 pcs) 4 stencils, 5 markers, 5 color pencils, an eraser, a pencil sharpener, 2 plates of stand-alone characters or decors and a coloring book.

model: **TOY STORY**  
 ref: 716JE05  
 EAN: 3700572300221



Disney-PIXAR  
**TOY STORY**



©Disney/Pixar  
 Mr POTATO HEAD is a trademark of Hasbro used with permission. © 2010 Hasbro, all rights reserved. Slinky Dog ©, © Poof-Slinky, Inc.

model: **Tangled**  
 ref: 716JE06  
 EAN: 3700572300238



**Tangled**



©Disney



# Creative Box 3D

- SIZE: CLOSED: 247 x 40 x 163 mm
- MASTER CASE: 18 pieces  
504 x 370 x 173 mm - 10 kg
- PALLET: 40 Master cases (720 Creative Box 3D)  
80 x 120 x 188 cm - 10 layers - 4 master cases by level

model: **PIRONOS**  
ref: 716JE07  
EAN: 3700572300245



©Pop Systems International

model: **JUNGLE**  
ref: 716JE08  
EAN: 3700572300252



©Pop Systems International



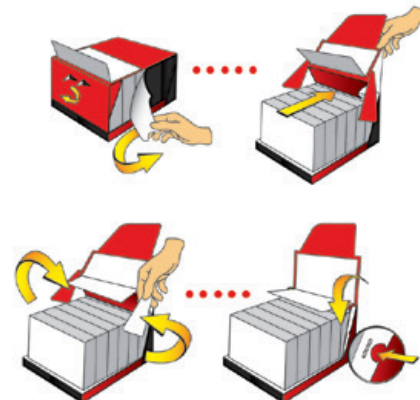
# Creative Box 3D Display

**Contains 6 Creative Box 3D**

with a real popup to draw the attention on the 3D aspect of the product.

- SIZE: CLOSED: 255 x 260 x 170 mm  
OPENED: 255 x 260 x 455 mm
- MASTER CASE: 3 displays of 6 Creative Box 3D (18 Creative Box 3D) 790 x 265 x 180 mm - 10,6 kg
- PALLET: 40 Master cases (720 Creative Box 3D) 80 x 120 x 195 cm - 10 layers - 4 master cases by level

## Sale Shelf display



model: **Cars 2**  
ref: 717JE01\_Display  
EAN: 3700572300269





# Creative Box<sup>®</sup> 3D Display

**Contains**  
**72 Creative Box 3D**  
(36 x 2 references)  
2 displays by Euro Pallet

- **SIZE: CLOSED:** 550 x 410 x 1165 mm (top card non included)  
**OPENED:** 550 x 410 x 1615 mm (top card included)
- **WEIGHT:** ±40 kg
- **MASTER CASE STOCK :** 9 pcs of each reference (so 18 boxes) - 504 x 370 x 173 mm - ± 10 kg
- **PALLET:** 2 displays by pallet (80 x 120 x 132 cm) or 40 Master cases Stock (720 pieces) 10 layers - 4 master cases by level 80 x 120 x 188 cm

## Promotional Sale Display



model:  
**Bars - Princess**  
ref: 716JE01&02\_Display  
EAN: 3700572301457





◉The Ultimate 3D Experience◉



**PO9**  
**SYSTEMS**  
INTERNATIONAL

Rue du Vieux Chaffour, 5  
4841 Henri-Chapelle  
BELGIUM

TEL: +32 87 31 36 80

FAX: +32 87 31 36 81

EMAIL: [info@popandplay.com](mailto:info@popandplay.com)

WEBSITE: [www.popandplay.com](http://www.popandplay.com)